










Jefferson Village Square 2725 Jefferson St. Carlsbad, CA 92008



-  Convenient Carlsbad Village Location
-  Office suites from 250 to 1,000 square feet
-  Six Common Area Restrooms
-  Operable windows in all suites
-  On-site manager, friendly atmosphere, and outside eating areas
-  17,527 SF, two-story office building with ample parking
-  Located at the corner of Laguna and Jefferson with great freeway access
-  ATT U-verse, ATT Fiber and Spectrum Internet available
-  Rents from \$2.25 – 3.50 sq. ft.



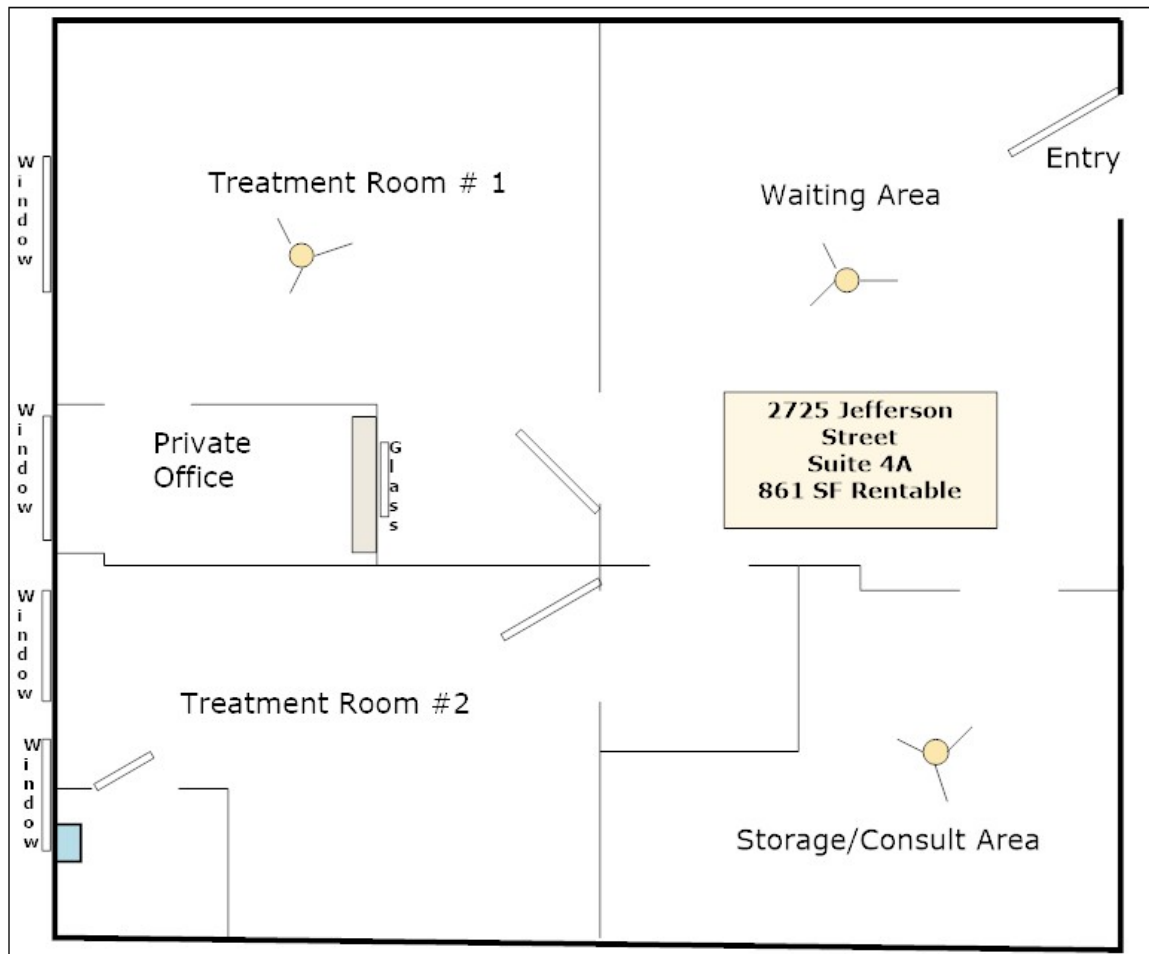
Lockwood
Commercial Realty

Charles Currey, SIOR
760.730.9100 x 301
chuck@lockwoodcommercial.com
#00658596

2725 Jefferson Street, Suite 1 Carlsbad CA, 92008 Phone 760.730.9100 Fax 760.730.9200 www.lockwoodcommercial.com
Information herein is deemed reliable and we have no reason to doubt its accuracy, but it is not guaranteed

Jefferson Village Square 2725 Jefferson St. Carlsbad, CA 92008

Suite #	Rentable Area	Cost Per Square Foot	Amenities
4A	861	\$2.55	Former Chiropractic Office with waiting area, 2 treatment rooms, storage/consult room, and 4 operable windows



All rates subject to change without notice. No medical or healthcare services allowed in second floor suites.



Lockwood
Commercial Realty

Charles Currey, SIOR
760.730.9100 x 301
chuck@lockwoodcommercial.com
#00658596

2725 Jefferson Street, Suite 1 Carlsbad CA, 92008 Phone 760.730.9100 Fax 760.730.9200 www.lockwoodcommercial.com

Information herein is deemed reliable and we have no reason to doubt its accuracy, but it is not guaranteed