








For Lease Palomar Oaks Point

1901 Camino Vida Roble,
Carlsbad, Ca 92008



-  2 Story, Class A Office Building
-  44,821 SF- Parking Ratio: 4.5 spaces/1,000 SF
-  Full Building Glass Line with Views
-  Upgraded Lobby Areas with Marble Floor and Interior and Exterior Fountains
-  Four Large Restrooms with Showers and Lockers on First Floor
-  High Speed Internet Options to Include Cox and Spectrum
-  Flexible Floor Plans and Tenant Improvement Allowances Available for Longer Term Leases at Additional Monthly Expense

Asking Lease Rate \$2.10 PSF + electric



Lockwood
Commercial Realty

Charles Currey, SIOR
760.730.9100 x 301
chuck@lockwoodcommercial.com
#00658596

For Lease Palomar Oaks Point

1901 Camino Vida Roble,
Carlsbad, Ca 92008

Leasing Schedule February 2018

Suite #	Rentable Area	Rate/Sq. Ft.	Total Rate*
110	2,114 SF	\$2.10	\$4,439.00
202	2,377 SF	\$2.10	\$4,992.00
208	5,109 SF	\$2.20	\$11,240.00

*Rate as shown includes 5 day per week janitorial services. Rate does not include electric service which is payable directly to SDGE or is calculated on Pro-Rata basis.

All rates are quoted on a first come, first serve basis. Asking lease rates may change without notice. Rates apply to the first twelve months of the term only.

Property is Co-Listed with Colliers International

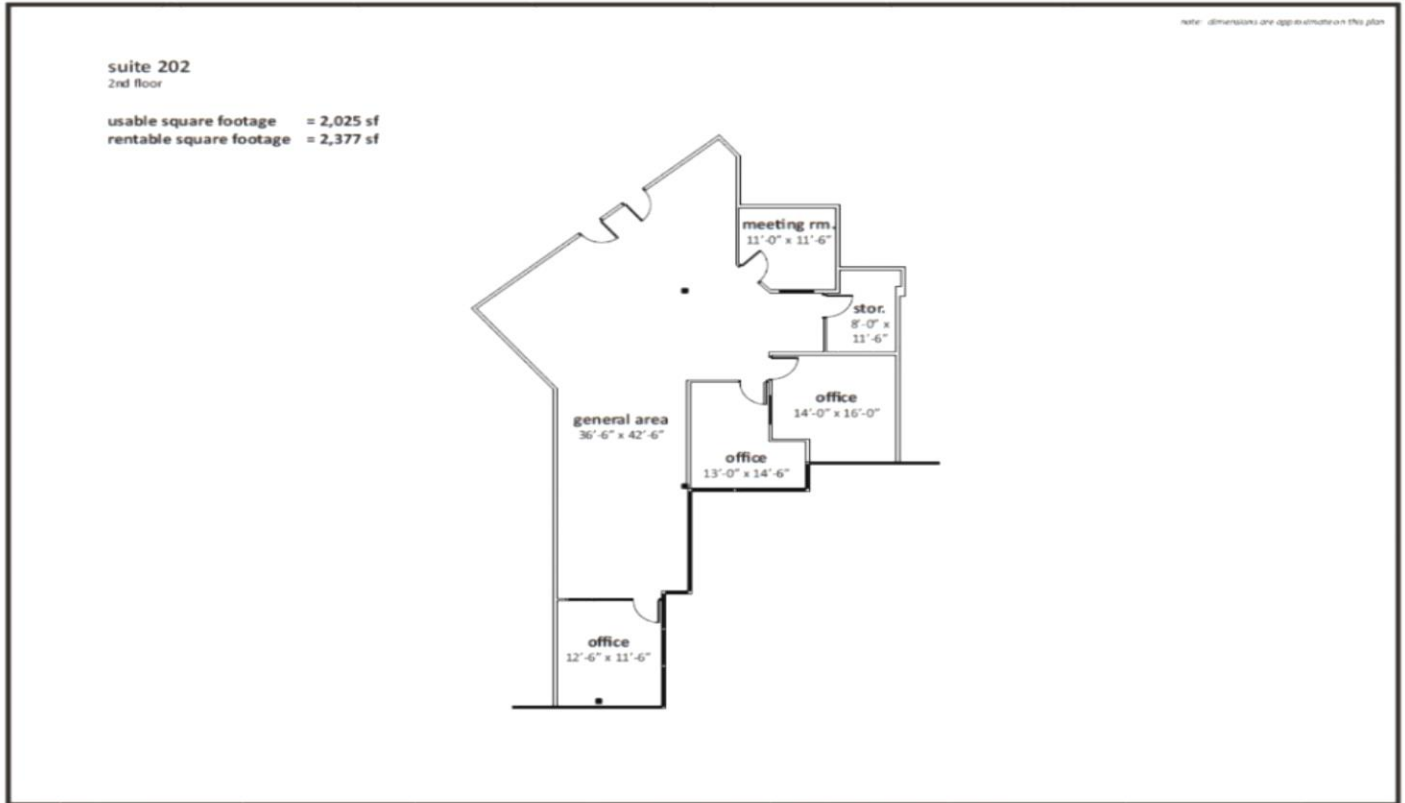


Lockwood
Commercial Realty

Charles Currey, SIOR
760.730.9100 x 301
chuck@lockwoodcommercial.com
#00658596

For Lease Palomar Oaks Point

For Lease Palomar Oaks Point



1901 Camino Vida Roble
Carlsbad, California

marketing plans by: **1070architecture**
visit tenseventyarchitecture.com



Lockwood
Commercial Realty

Charles Currey, SIOR
760.730.9100 x 301
chuck@lockwoodcommercial.com
#00658596

2725 Jefferson Street, Suite 1 Carlsbad CA, 92008 Phone 760.730.9100 Fax 760.730.9200 www.lockwoodcommercial.com
Information herein is deemed reliable and we have no reason to doubt its accuracy, but it is not guaranteed.

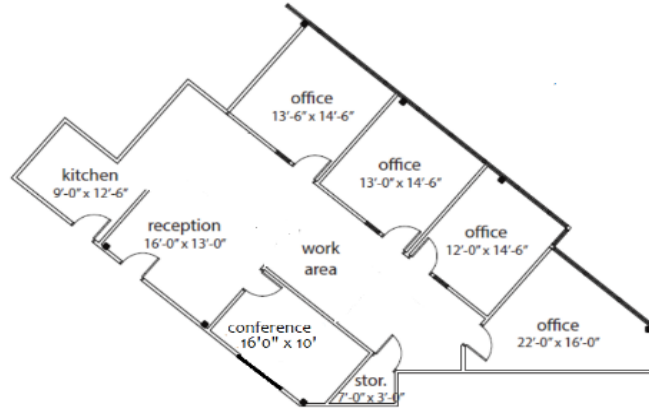
For Lease Palomar Oaks Point

For Lease Palomar Oaks Point

note: dimensions are approximate on this plan

suite 110
1st floor

usable square footage = 1,816 sf
rentable square footage = 2,114 sf



1901 Camino Vida Roble
Carlsbad, California

marketing plans by:
visit tenseventyarchitecture.com

tenseventyarchitecture
tenseventy



Lockwood
Commercial Realty

Charles Currey, SIOR
760.730.9100 x 301
chuck@lockwoodcommercial.com
#00658596

For Lease Palomar Oaks Point

For Lease Palomar Oaks Point

suite 208
2nd floor

exec. office
20'-0" x 20'-0"

conf. room
19'-0" x 15'-6"

reception
16'-0" x 19'-0"

office
14'-0" x 14'-0"

office
12'-0" x 13'-6"

office
12'-0" x 13'-6"

office
12'-0" x 13'-6"

general area
60'-0" x 20'-0"

office
12'-0" x 13'-6"

stor.
6'-0" x 15'-6"

office
14'-0" x 13'-0"

work area

usable square footage = 4,390 sf
rentable square footage = 5,109sf

for leasing information
please contact:



Lockwood
Commercial Realty

Charles Currey, SIOR
760.730.9100 x 301
chuck@lockwoodcommercial.com
#00658596