

For Lease

Westview Plaza

1582 W. San Marcos Blvd.
San Marcos, Ca 92078



Landmark location across from San Marcos High School and contiguous to High Tech High, Middle and Elementary Schools



Complete exterior remodel



Fire sprinklers, monument sign, landscaped street frontage, 82 parking spots



Suites built out for medical, dental and office users



All medical suites available have elevator access

Asking Lease Rate- \$1.50 PSF + utilities and janitorial

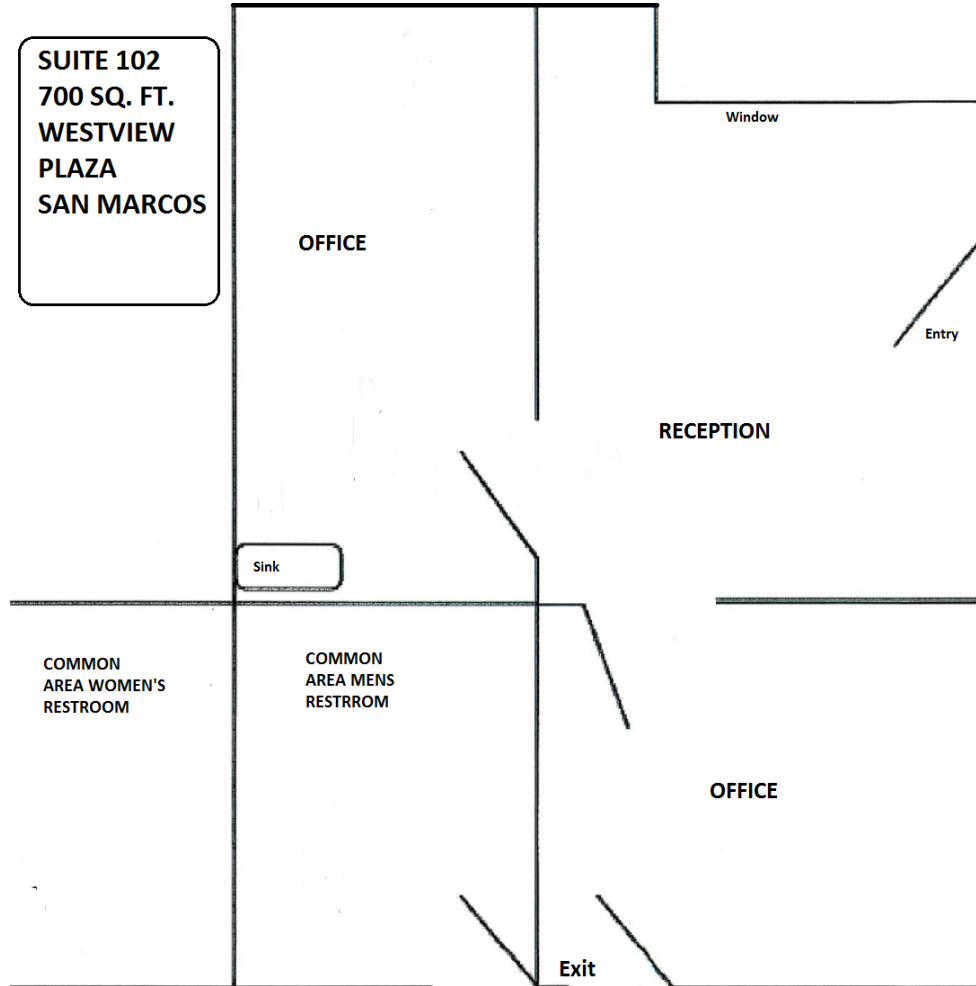


Lockwood
Commercial Realty

Charles Currey, SIOR
760.730.9100 x 301
chuck@lockwoodcommercial.com
#00658596

For Lease Westview Plaza

1852 W. San Marcos Blvd.
San Marcos, Ca 92078



Lockwood
Commercial Realty

Charles Currey, SIOR
760.730.9100 x 301
chuck@lockwoodcommercial.com
#00658596

For Lease
Westview Plaza

1852 W. San Marcos Blvd.
San Marcos, Ca 92078

Rental Schedule
February 2018

Suite	Rentable Area	Lease Rate PSF	Total Monthly Rate*
102	700 SF	\$1.50	\$1,050
304	1,415 SF	\$1.35	\$1,910

*Does not include utilities or janitorial

All rates are quoted on a first come, first serve basis. Asking lease rates may change without notice. Rates apply to the first twelve months of the term only.



Lockwood
Commercial Realty

Charles Currey, SIOR
760.730.9100 x 301
chuck@lockwoodcommercial.com
#00658596