

NOW LEASING INDUSTRIAL SPACE

8358-8362 STANDUSTRIAL STREET, STANTON, CA 90680



NOW LEASING INDUSTRIAL SPACE

8358-8362 STANDUSTRIAL STREET, STANTON, CA 90680



6,606 SF Industrial Space

3,100 SF Fenced Yard Space

NOW LEASING INDUSTRIAL SPACE

8358-8362 STANDUSTRIAL STREET, STANTON, CA 90680



 Lockwood Commercial Realty

CHARLES CURREY, SIOR 760.730.9100
CHUCK@LOCKWOODCOMMERCIAL.COM #00658596

NOW LEASING INDUSTRIAL SPACE

8358-8362 STANDUSTRIAL STREET, STANTON, CA 90680

Building Area 6,606 sq. ft.

Yard Area 3,100 sq. ft.

Truck Access 10'x12' grade level door

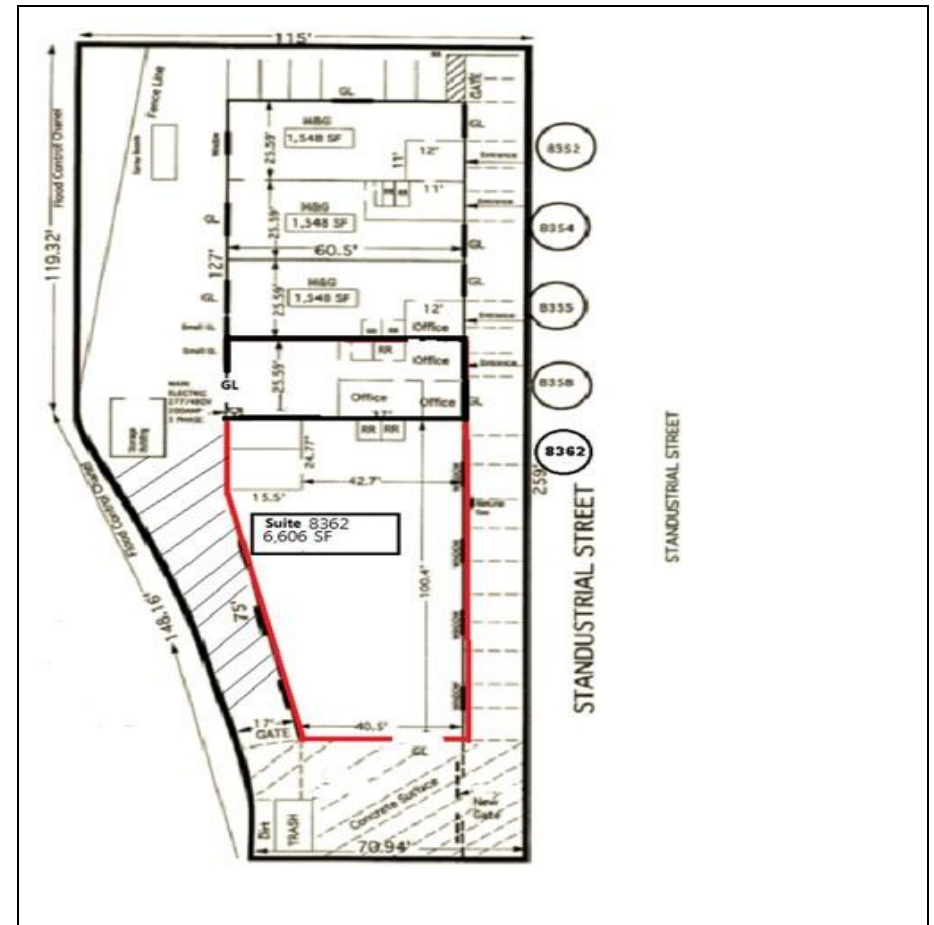
Ceiling Height 14 feet to 16 feet

Eleven (9) Parking Spaces

Electrical Power 200 Amp - 120 volt panel

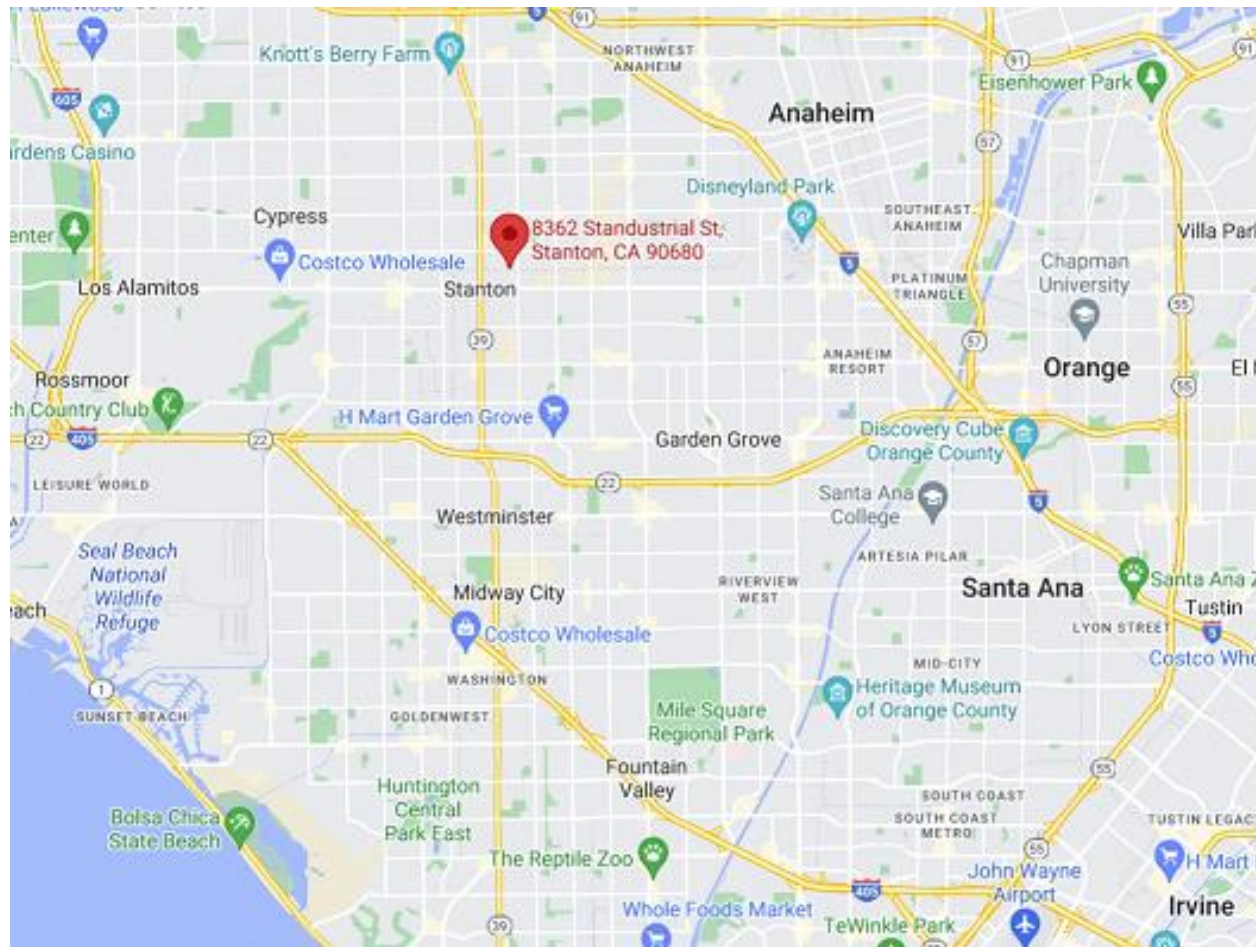
Lease Rate:

**\$8,910 per Month + electric, water/sewer
and trash**



NOW LEASING INDUSTRIAL SPACE

8358-8362 STANDUSTRIAL STREET, STANTON, CA 90680



 Lockwood Commercial Realty

CHARLES CURREY, SIOR 760.730.9100
CHUCK@LOCKWOODCOMMERCIAL.COM #00658596