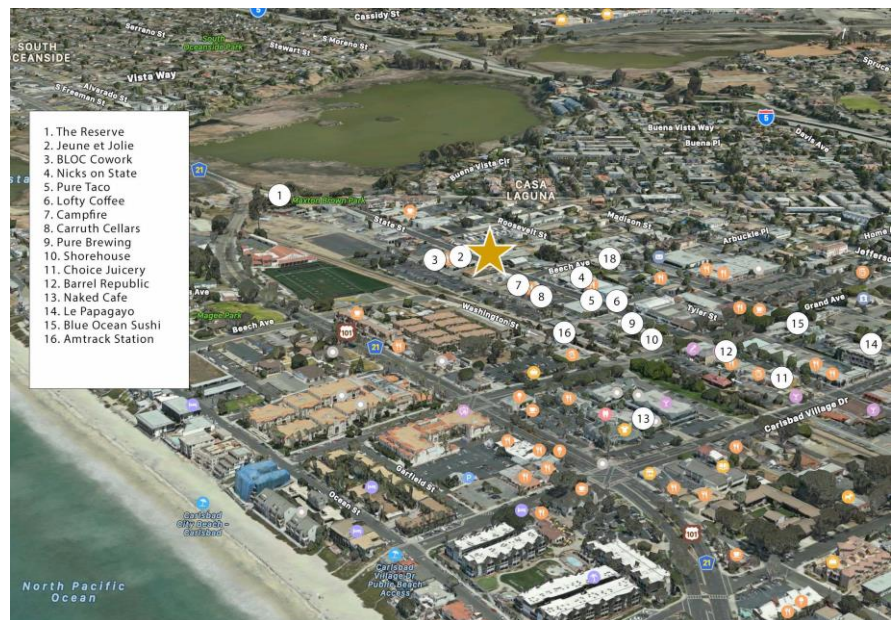


NOW LEASING



2621 Roosevelt Street, Carlsbad, CA 92008

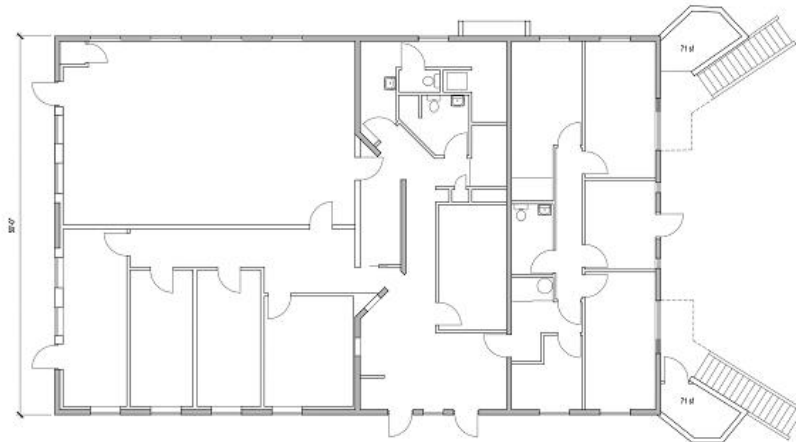
- Two Story Walk-Up Office Building
- 6,000 Sq.Ft. of Building Area
- First Floor of 4,000 Sq.Ft. and Second Floor of 2,000 Sq.Ft. may be Leased in Combination or Separately
- 3,500 Sq.Ft. Fenced Rear Yard
- 18-20 Parking Spaces on site
- Building & Monument Signage Available
- Lease Rate \$1.75 per Sq.Ft. NNN
- Flexible Terms Available
Contact Charles D. Currey, SIOR
Lockwood Commercial Realty



Charles Currey, SIOR #00658596
760.730.9100 x 301
chuck@lockwoodcommercial.com

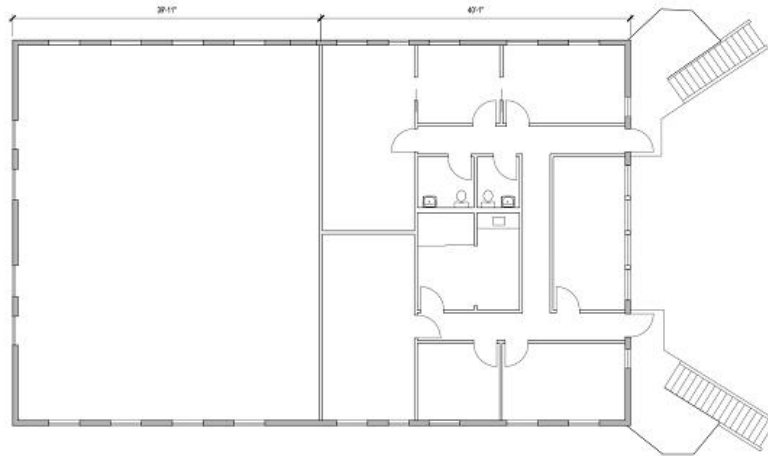
NOW LEASING

2621 Roosevelt Street Carlsbad, CA 92008



EXISTING 1ST LEVEL FLOOR PLAN
SCALE: 1" = 8'-0"

4000 sf



EXISTING 2ND LEVEL FLOOR PLAN
SCALE: 1" = 8'-0"

2000 sf



Lockwood
Commercial Realty

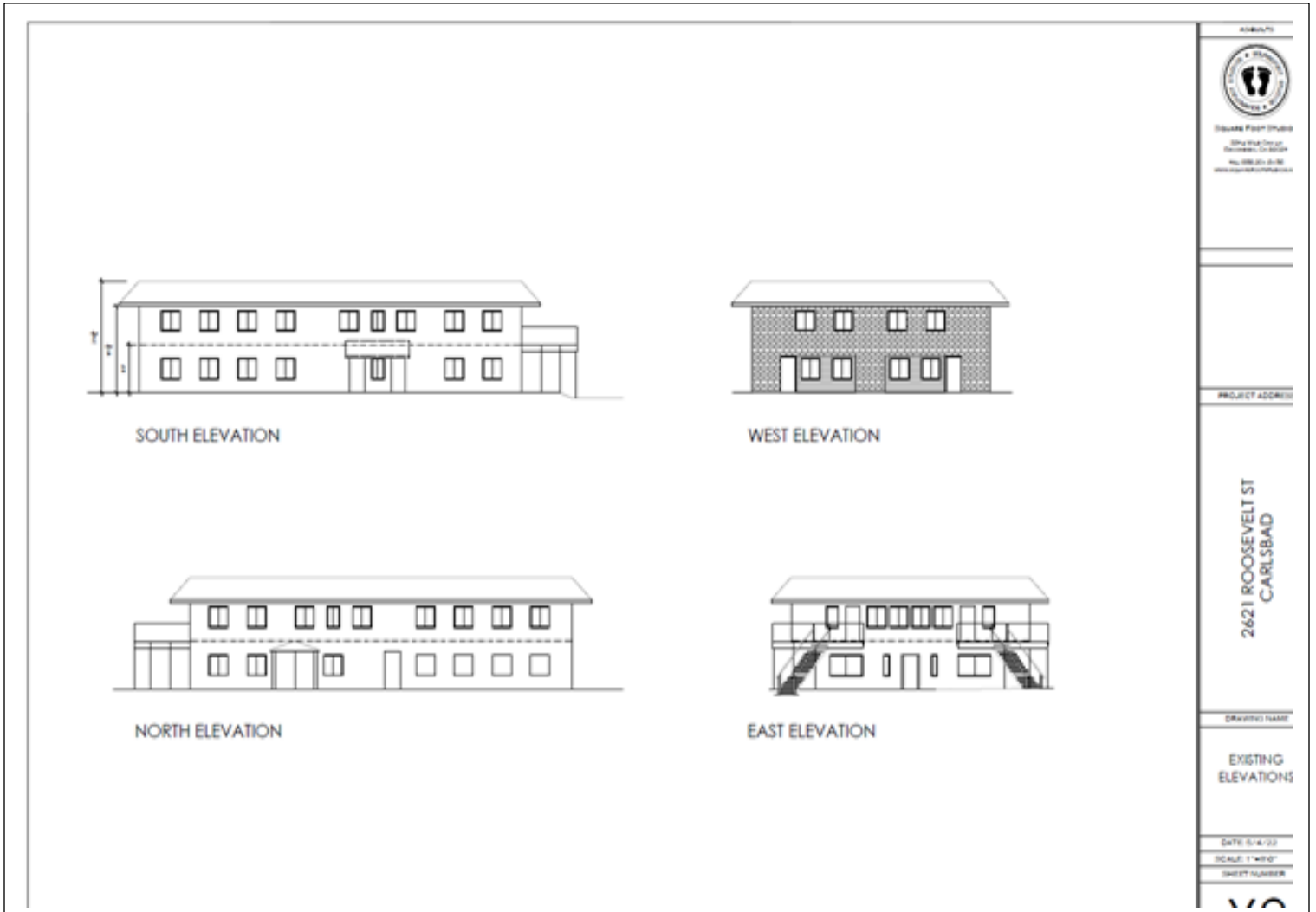
Charles Currey, SIOR #00658596
760.730.9100 x 301
chuck@lockwoodcommercial.com

2725 Jefferson Street, Suite 1 Carlsbad CA, 92008 Phone 760.730.9100 Fax 760.730.9200 www.lockwoodcommercial.com

Information herein is deemed reliable and we have no reason to doubt its accuracy, but it is not guaranteed.

NOW LEASING

2621 Roosevelt Street Carlsbad, CA 92008



Lockwood
Commercial Realty

Charles Currey, SIOR #00658596
760.730.9100 x 301
chuck@lockwoodcommercial.com

2725 Jefferson Street, Suite 1 Carlsbad CA, 92008 Phone 760.730.9100 Fax 760.730.9200 www.lockwoodcommercial.com

Information herein is deemed reliable and we have no reason to doubt its accuracy, but it is not guaranteed.